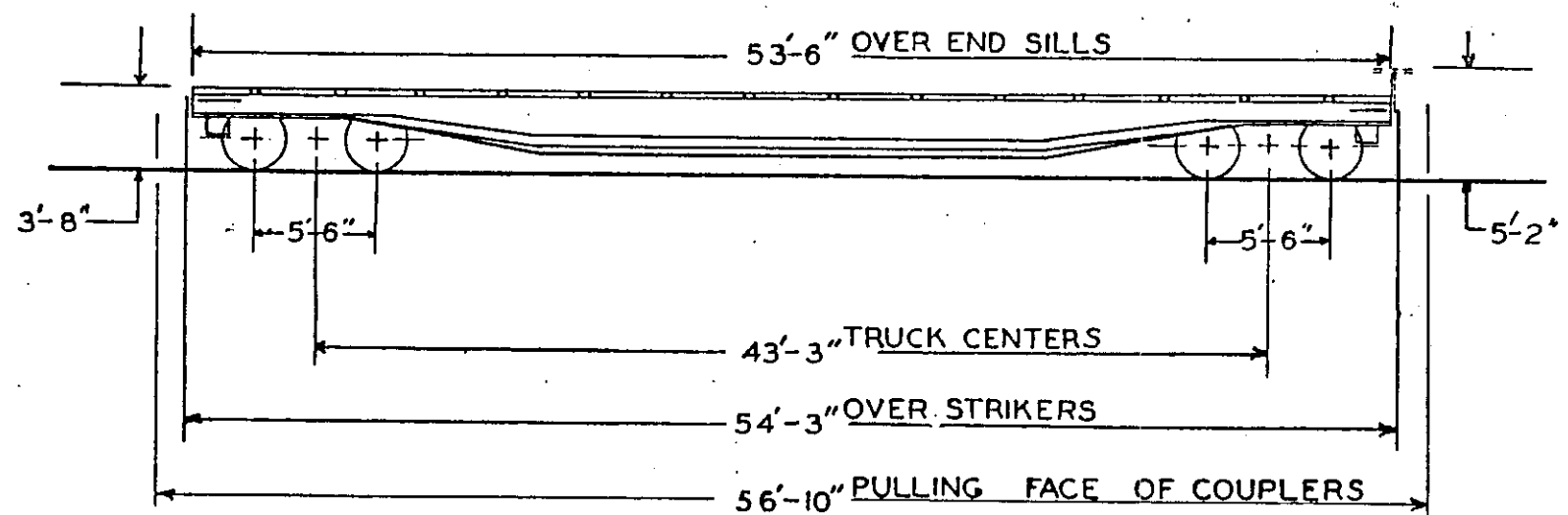


2954 - 2956 FLAT CARS



BUILT BY
 DATE BUILT
 REBUILT BY
 PURCHASED FROM
 PLACED IN SERVICE
 WHEELS
 TRUCKS
 AXLES
 BEARINGS
 UNDERFRAME
 LIGHTWEIGHT - LBS.
 CAPACITY
 COUPLERS
 YOKES
 AIRBRAKES
 HANDBRAKES

THRALL CAR MFG. CO.
 1958-1959
 THRALL CAR MFG. CO.
 1958-1959
 33"
 TYPE S-2-A-0 BARBER UNIT
 5-1/2" X 10"
 TIMKEN R.B.
 STEEL
 55,600
 100,000
 TYPE E-60
 TYPE Y-40
 WESTINGHOUSE AB-1012
 DROP SHAFT SUPERIOR

GENERAL DIMENSIONS:

TRAIN LENGTH 56'-10"
 MAX. HEIGHT 5'-2"
 MAX. WIDTH OVER DECK 10'-6"

SPECIAL EQUIPMENT:

8 STEEL DECK PLATES FOR PINNING
 CHOCK BLOCKS FOR 2 U.R.B.'S.
 TRAINLINE WIRING, 4 WIRE 200 AMPS
 240 VOLTS A.C.
 3 BRANCH LINE RECEPTACLES 3 WIRE
 4 POLE 20 AMP 240 VOLTS.

CK'D 2-83 RCK

ALASKA RR