

PLAT
of
U.S. SURVEY NO. 2123
of the
HOMESTEAD CLAIM
of
CARL C. WHITE

Executed under the Act of Congress,
Approved JUNE 28, 1918

situated

AT DUNBAR ON THE ALASKA RAILROAD

TERRITORY OF ALASKA

Area: 144.40 acres
Declination: 31° 30' E.
Scale: 5 chains to the inch

Latitude 64° 45' N. Longitude 148° 40' W.

Survey executed by

FLOYD G. BETTS, U.S. CADASTRAL ENGINEER

JUNE 28-30, 1932

CERTIFICATE OF APPROVAL
PUBLIC SURVEY OFFICE

Juneau, Alaska, MAY 16, 1933

The original field notes of Survey No. 2123, of the

HOMESTEAD CLAIM OF CARL C. WHITE

from which this plat has been made, have been examined and approved, and are on file in this office, and I hereby certify that they furnish such an accurate description of said claim as will, if incorporated into a patent, serve fully to identify the premises, and that such reference is made therein to natural objects and permanent monuments, as will perpetuate and fix the Locus thereof.

And I further certify that this is a correct plat of said claim, made in conformity with said original field notes of the survey thereof, and the same is hereby approved.

F. G. Betts
Cadastral Engineer in Charge

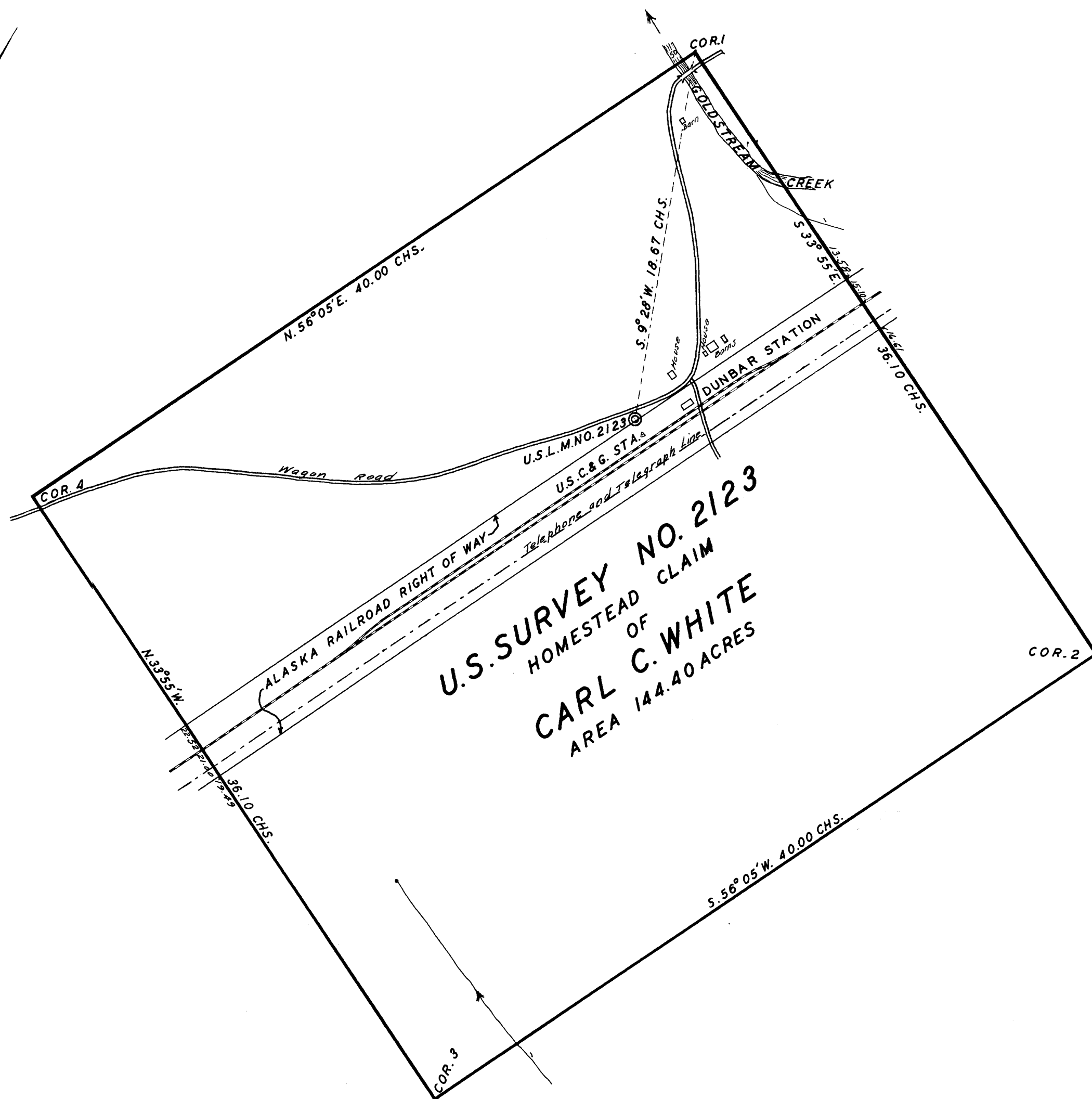
DEPARTMENT OF THE INTERIOR
GENERAL LAND OFFICE

Washington, D.C., January 6, 1934.

The survey represented by this plat having been correctly executed in accordance with the requirements of law and the regulations of this office, is hereby accepted.

J. H. Cannon

Acting Assistant Commissioner.



U.S. SURVEY NO. 2123
HOMESTEAD CLAIM
OF
CARL C. WHITE
AREA 144.40 ACRES

PWS
73